

MONTHLY MEMBERSHIP PROGRESS REPORT

District 133

Results as of: 3/31/2026

GMT:

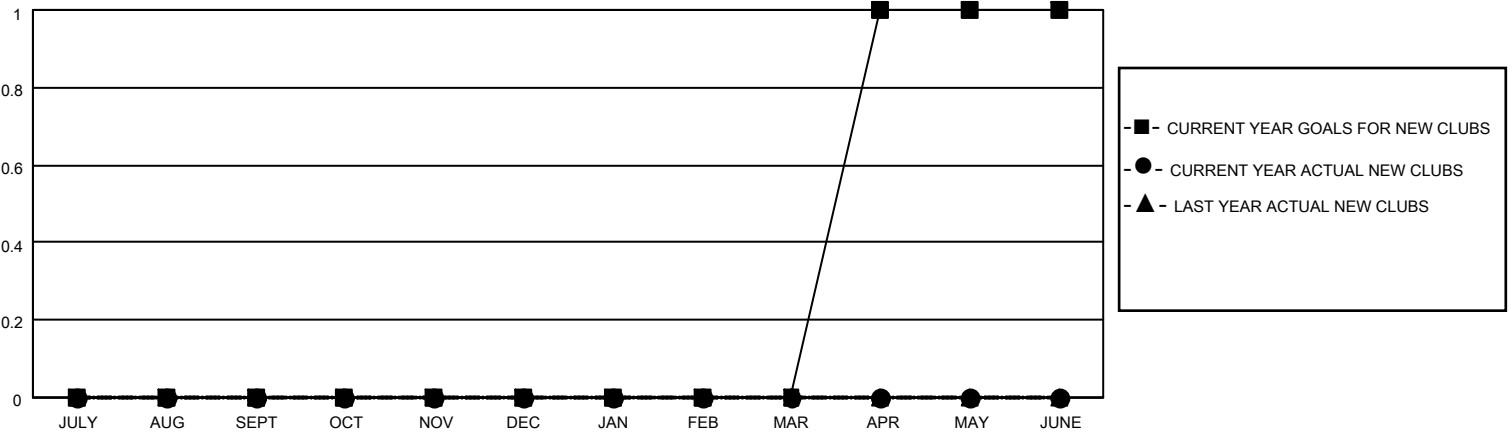
LOCATION REPUBLIC OF IRELAND

GMT CA

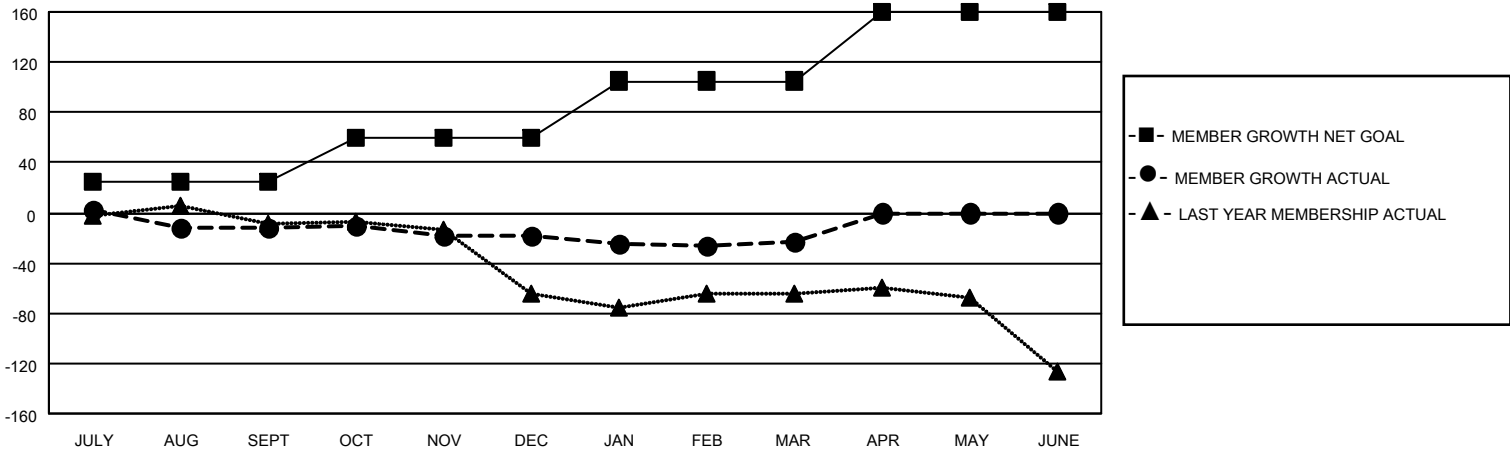
Clubs			
RESULTS FOR 2025-2026			
QUARTER	NEW CLUB GOAL	NEW CLUBS	DROPPED CLUBS
JULY/AUG/SEPT	0	0	0
OCT/NOV/DEC	0	0	0
JAN/FEB/MAR	0	0	0
APR/MAY/JUNE	1	0	0

Members			
RESULTS FOR 2025-2026			
QUARTER	MEMBER GROWTH NET GOAL	MEMBER GROWTH ACTUAL	DROPPED MEMBERS ACTUAL (including transfers)
JULY/AUG/SEPT	25	35	43
OCT/NOV/DEC	35	22	28
JAN/FEB/MAR	45	35	28
APR/MAY/JUNE	55	0	0

GOALS AND ACTUAL NEW CLUBS CUMULATIVE



GOALS AND ACTUAL MEMBERS CUMULATIVE



DROPPED CLUBS: 0	33 CLUBS OF 81 ADDED 1 OR MORE NEW MEMBERS	<u>GENDER DISTRIBUTION</u>	
<u>DROPPED MEMBERS</u>		MALE	1,299 (73.35%)
DECEASED	13	FEMALE	472 (26.65%)
CLUB CANCELLED	0	TOTAL FAMILY UNIT MEMBERS	
OTHER	86	50	
TOTAL	99	FAMILY MEMBERS PAYING HALF DUES	
		25	

[CLICK HERE FOR CUMULATIVE MEMBERSHIP DATA](#)